



# Lead Lined Hollow Metal Door Frame Quote Request Form

Company: \_\_\_\_\_ Project Name: \_\_\_\_\_ Date: \_\_\_\_\_  
 Contact: \_\_\_\_\_ Ship City, State: \_\_\_\_\_ Zip Code: \_\_\_\_\_ Quote Req'd by: \_\_\_\_\_  
 Email: \_\_\_\_\_ Phone #: \_\_\_\_\_ Fax#: \_\_\_\_\_

**Choose Material:**  CRS (std)  A60 Galv  Other: \_\_\_\_\_ **Choose Gage:**  16 (std)  14  12 **Jamb:**  2" (std)  4"  \_\_\_\_\_ **Head:**  2" (std)  4"  \_\_\_\_\_

**Anchors:**  Steel Stud "Z" (std at Welded Frames)  Wood Stud  Masonry Strap  Existing Opening (EO)  Compression (std at KD frames)  See attached drawing

**Profile:**  Masonry (std)  Drywall return **Rabbet Type:**  Double Rabbet (std)  Single Rabbet  See attached drawing **Construction Type:**  Set-Up and Welded  Knock Down (KD)

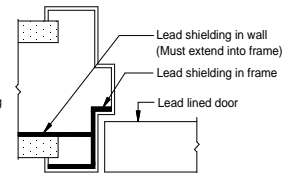
**Notes:** 1. Frames are prime painted gray. 2. Heads are reinforced for regular & parallel arm closers. 3. All frames on this sheet to have same gage, material, profile, etc.

| Item | Qty | Lead | Sgl / Pr | Rating | Width | Height | Wall Thk | Type 1 or 2 | Hinges or Pivots | Strike or Flush Bolt | Special Preps, Instructions, etc. |
|------|-----|------|----------|--------|-------|--------|----------|-------------|------------------|----------------------|-----------------------------------|
| A    |     |      |          |        | x     | x      |          |             |                  |                      |                                   |
| B    |     |      |          |        | x     | x      |          |             |                  |                      |                                   |
| C    |     |      |          |        | x     | x      |          |             |                  |                      |                                   |
| D    |     |      |          |        | x     | x      |          |             |                  |                      |                                   |
| E    |     |      |          |        | x     | x      |          |             |                  |                      |                                   |
| F    |     |      |          |        | x     | x      |          |             |                  |                      |                                   |
| G    |     |      |          |        | x     | x      |          |             |                  |                      |                                   |
| H    |     |      |          |        | x     | x      |          |             |                  |                      |                                   |
| I    |     |      |          |        | x     | x      |          |             |                  |                      |                                   |
| J    |     |      |          |        | x     | x      |          |             |                  |                      |                                   |
| K    |     |      |          |        | x     | x      |          |             |                  |                      |                                   |

Notes / Remarks:

**TYPE 1 DOOR FRAME:**

Lead lined door is on the same side of wall as lead shielding



**TYPE 2 DOOR FRAME:**

Lead lined door is on the opposite side of wall from lead shielding

