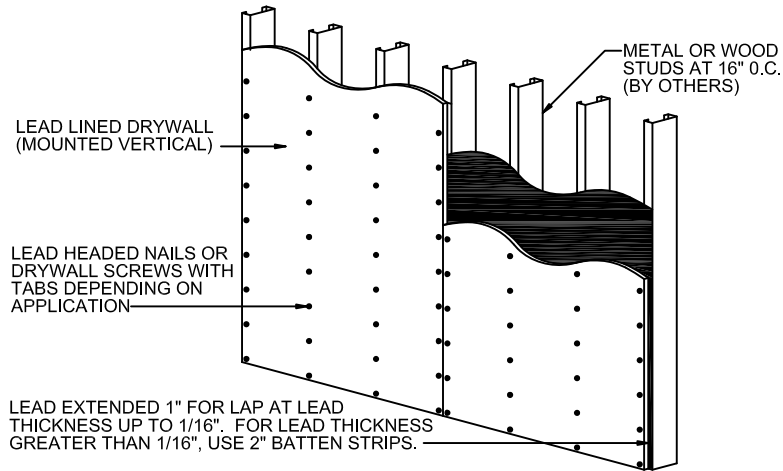


# LEAD LINED DRYWALL DETAILS

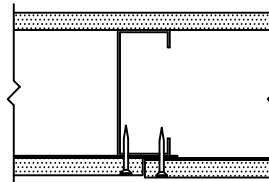


268 OLD LINDALE RD. ▲ ROME, GA 30161  
706-235-8822 ▲ FAX 706-232-2518

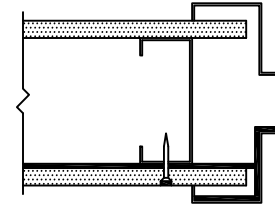


LEAD EXTENDED 1" FOR LAP AT LEAD THICKNESS UP TO 1/16". FOR LEAD THICKNESS GREATER THAN 1/16", USE 2" BATTEN STRIPS.

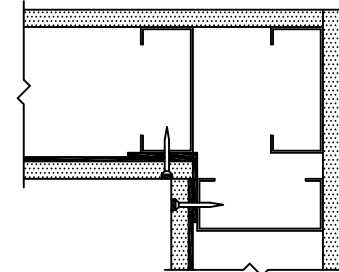
DRYWALL JOINT WITH 1" LAP FOR LEAD UP TO 1/16"



DRYWALL JOINT WITH 1" LAP FOR LEAD UP TO 1/16"



INTERSECTION AT FRAME (MAKE SURE LEAD OVERLAPS WITH LEAD IN FRAME)

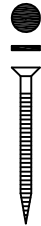


INSIDE CORNER WITH 2" x 2" LEAD CORNER ANGLE FOR LEAD THICKNESS GREATER THAN 1/16". FOR LEAD THICKNESS UP TO 1/16" CUT DRYWALL AWAY AND BEND LEAD TO OVERLAP 1". (OUTSIDE CORNER IS SIMILAR)

**NOTES:**

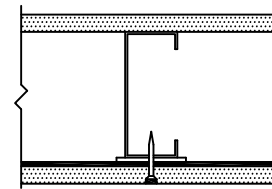
1. ALL DRYWALL SCREWS ARE BY OTHERS.
2. FOLLOW PHYSICIST AND/OR NCRP (NATIONAL COUNCIL ON RADIATION PROTECTION AND MEASUREMENTS) REPORTS # 49 & 116 FOR RECOMMENDATIONS ON SHIELDING CONFIGURATIONS OR LOCAL CODES WHERE APPLICABLE.
3. LEAD LINED DRYWALL IS SHOWN INSTALLED ON METAL STUDS. ALL OTHER APPLICATIONS SUCH AS WOOD STUDS, METAL FURRING OR WOOD FURRING ARE SIMILAR.
4. WHEN DRYWALL IS TRIMMED TO WIDTH, USE ALL PARTIAL PIECES AS REQUIRED.
5. PLYWOOD IS SIMILAR EXCEPT BATTEN STRIPS ARE USED FOR EVERY LEAD THICKNESS.

INSTALLING SCREW & TAB:  
INSERT SCREW INTO DRYWALL UNTIL IT IS SLIGHTLY DEEPER THAN TAB THICKNESS. THEN GLUE TAB IN PLACE. FINISH WITH STANDARD JOINT COMPOUND.

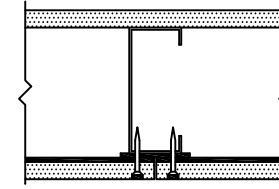


5/16" Ø LEAD TAB TO COVER SCREW HEAD

INSTALL SCREW & TAB @ 8" O.C.

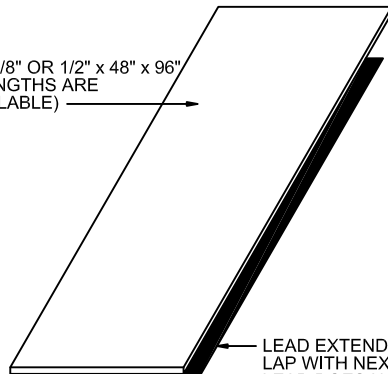


SHIM AT INTERMEDIATE STUD (IF REQUIRED, BY OTHERS)



DRYWALL JOINT WITH 2" WIDE LEAD BATTEN STRIP FOR LEAD GREATER THAN 1/16"

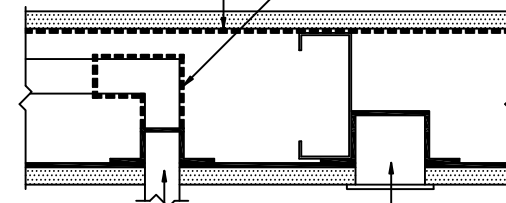
DRYWALL 5/8" OR 1/2" x 48" x 96" (OTHER LENGTHS ARE ALSO AVAILABLE)



LEAD EXTENDS 1" PAST DRYWALL ON ONE SIDE TO ALLOW LAP WITH NEXT PIECE FOR LEAD THICKNESS UP TO 1/16". LEAD DOES NOT EXTEND PAST DRYWALL FOR LEAD THICKNESS GREATER THAN 1/16", AND 2" LEAD BATTEN STRIPS ARE REQUIRED.

ALTERNATE METHOD:  
INSTALL SHEET LEAD BEHIND BOX INSTEAD OF WRAPPING THE UNIT.

LEAD SHIELDING MAY BE REQUIRED AT DUCT OR PIPE BEND.



PIPE OR DUCT WRAPPED WITH SHEET LEAD AND FLARED OUT TO OVERLAP LEAD IN WALL.

ELECTRICAL OUTLET BOX OR X-RAY VIEW PANEL WRAPPED WITH SHEET LEAD AND FLARED OUT TO OVERLAP LEAD IN WALL.