



**DOOR MACHINING REQUIREMENTS FOR LEAD LINED WOOD DOORS - SINGLE SWING/ACTIVE**

Customer: \_\_\_\_\_ PO#: \_\_\_\_\_

Job Name: \_\_\_\_\_

<b>Hinge / Pivot</b> Mfg.: Temp. #: Temp. #: Size: Gauge: Backset:	<b>Cylindrical Lock</b> Mfg.: Series: Temp. #: Temp. #: Backset:	<b>Dead Bolt</b> Mfg.: Series: Temp. #: Temp. #: Function: Backset:	<b>Mortise Lock</b> Mfg.: Series: Temp. #: Temp. #: Function: Backset:
--	---	---	--

BEVEL	
Lock stile	Hinge stile

**Veneer Species & Color:**  
 Grade:  
 Cut:  
 Match:

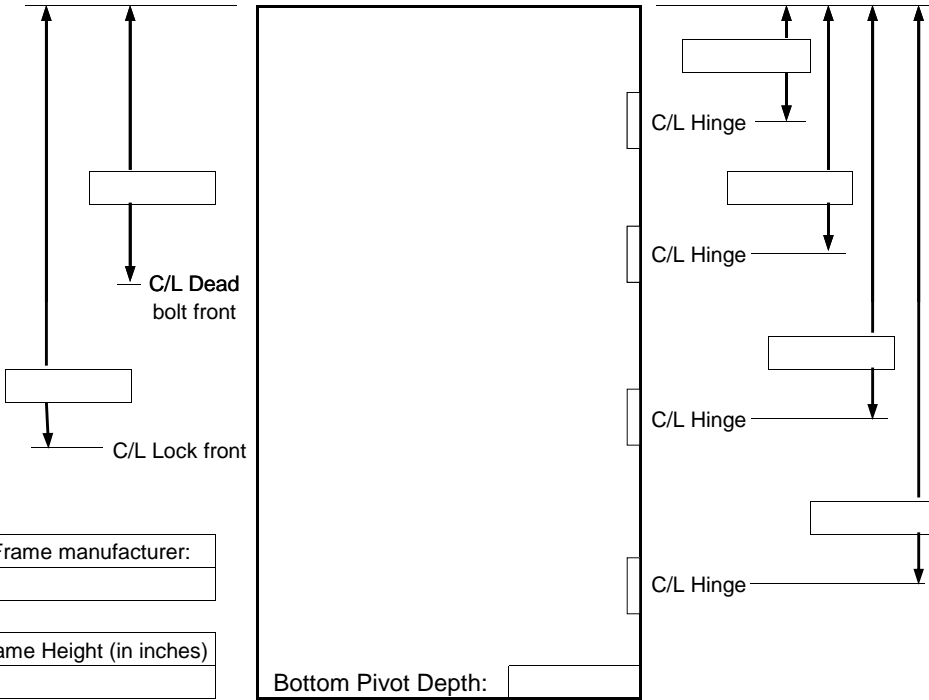
**NOTE: All measurements from top of door to centerline of hardware!**

**Plastic Laminate Mfg:**  
 Color:  
 Number:  
 Plastic on stile:

<b>Vision Lite</b>	<b>Width</b>	<b>Height</b>
Cutout size:		x
<b>Note: Stile dimensions are to lite cutout!</b>		
<b>Lock stile:</b>	<b>Top Rail:</b>	
SAK	Glass thk.:	
AA	Glass thk.:	

**Remarks/Special Instructions:**

**Door Type:**  
**Core Type:**



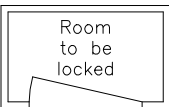
Frame manufacturer: \_\_\_\_\_

Frame Height (in inches) \_\_\_\_\_

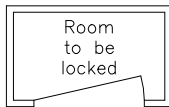
(Use at doors with Pivots)

Quantity	Prefit size	Lead thickness	Label	Door Numbers	Swing

Right hand (RH)



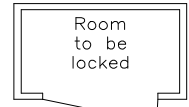
Left hand (LH)



Right hand reverse (RHR)



Left hand reverse (LHR)





**DOOR MACHINING REQUIREMENTS FOR LEAD LINED WOOD DOORS - BACTIVE**

Customer: \_\_\_\_\_ PO#: \_\_\_\_\_

Job Name: \_\_\_\_\_

<b>Hinge / Pivot</b>	<b>W' Gf]_Y</b>	<b>8 YUX'6 c'hGf]_Y</b>
Mfg.:	Mfg.:	Mfg.:
Temp. #:	Temp. #:	Temp. #:
Temp. #:	Temp. #:	Temp. #:
Size:	Temp. #:	Temp. #:
Gauge:	Temp. #:	Temp. #:
Backset:	Backset:	Backset:

BEVEL	
Lock stile	Hinge stile

**Veneer Species & Color:**  
**Grade:**  
**Cut:**  
**Match:**

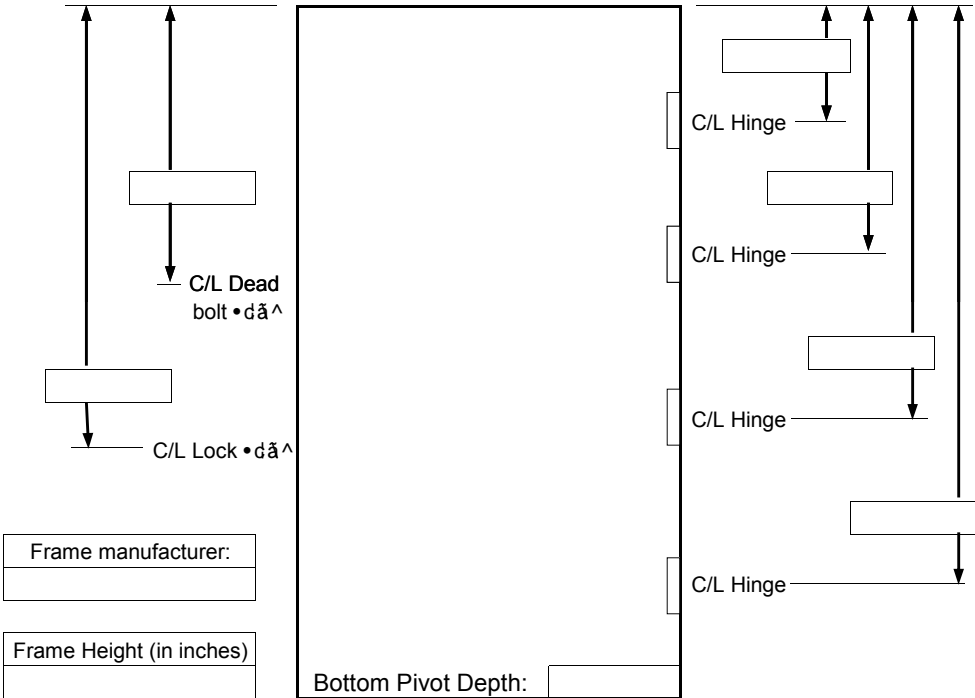
**NOTE: All measurements from top of door to centerline of hardware!**

**Plastic Laminate Mfg:**  
**Color:**  
**Number:**  
**Plastic on stile:**

<b>Vision Lite</b>	<b>Width</b>	<b>Height</b>
Cutout size:	x	
<b>Note: Stile dimensions are to lite cutout!</b>		
<b>Lock stile:</b>	<b>Top Rail:</b>	
	Glass thk.:	
	Glass thk.:	

**Remarks/Special Instructions:**

**Door Type:**  
**Core Type:**



Frame manufacturer:

Frame Height (in inches)

(Use at doors with Pivots)

Quantity	Prefit size	Lead thickness	Label	Door Numbers	Swing

